

Revised August 2015

# Massachusetts Music Educators Association

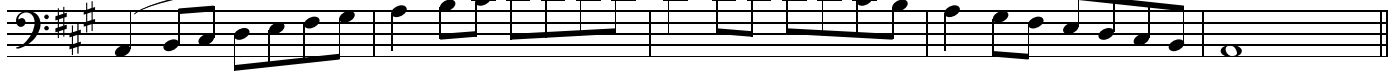
## Jazz Trombone Scales

♩ = 100

E Major



A Major



D Major



G Major



C Major



F Major



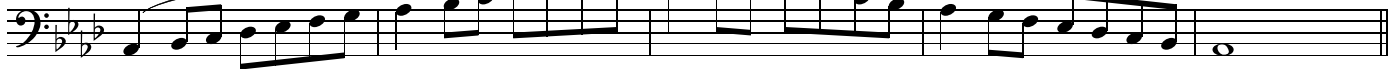
B♭ Major



E♭ Major



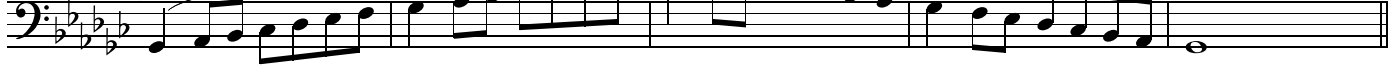
A♭ Major



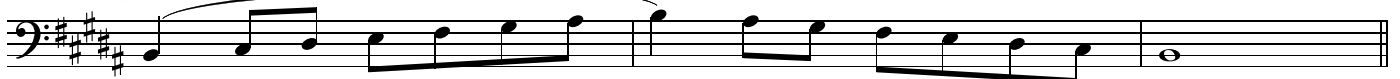
D♭ Major



G♭ Major



B Major



c# harmonic minor



f# harmonic minor



b harmonic minor



e harmonic minor



a harmonic minor



d harmonic minor



g harmonic minor



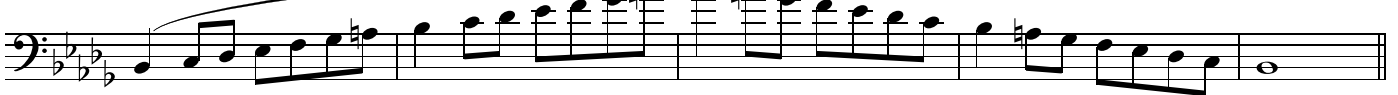
c harmonic minor



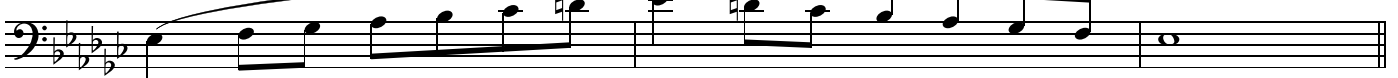
f harmonic minor



bb harmonic minor



eb harmonic minor



ab harmonic minor



Chromatic

Two staves of music in bass clef. The first staff contains a chromatic scale starting on C2, moving up through C#2, D2, D#2, E2, E#2, F2, F#2, G2, G#2, A2, A#2, B2, and ending on C3. The second staff contains a chromatic scale starting on C3, moving down through B2, Bb2, Ab2, Gb2, Fb2, E2, Eb2, D2, Db2, C2, and ending on B1. Both staves feature numerous triplet markings (the number '3') over groups of three notes.

Concert C Dorian

A single staff in bass clef showing the Concert C Dorian mode. The notes are C2, D2, Eb2, E2, F2, G2, A2, B2, and C3. The scale is presented in a single line with a final whole note C3.

Concert C Lydian

A single staff in bass clef showing the Concert C Lydian mode. The notes are C2, D2, E2, F#2, G2, A2, B2, and C3. The scale is presented in a single line with a final whole note C3.

Concert C Mixolydian

A single staff in bass clef showing the Concert C Mixolydian mode. The notes are C2, D2, E2, F2, G2, Ab2, B2, and C3. The scale is presented in a single line with a final whole note C3.