

Revised August 2015

Massachusetts Music Educators Association

Jazz Trumpet Scales

♩ = 100

E Major

Musical staff for E Major scale in treble clef, common time. The scale is written as a single melodic line with a slur over the entire phrase. The notes are E4, F#4, G4, A4, B4, C#5, D5, E5, D5, C#5, B4, A4, G4, F#4, E4.

A Major

Musical staff for A Major scale in treble clef, common time. The scale is written as a single melodic line with a slur over the entire phrase. The notes are A3, B3, C#4, D4, E4, F#4, G4, A4, G4, F#4, E4, D4, C#4, B3, A3.

D Major

Musical staff for D Major scale in treble clef, common time. The scale is written as a single melodic line with a slur over the entire phrase. The notes are D3, E3, F#3, G3, A3, B3, C#4, D4, C#4, B3, A3, G3, F#3, E3, D3.

G Major

Musical staff for G Major scale in treble clef, common time. The scale is written as a single melodic line with a slur over the entire phrase. The notes are G2, A2, B2, C3, D3, E3, F#3, G3, F#3, E3, D3, C3, B2, A2, G2.

C Major

Musical staff for C Major scale in treble clef, common time. The scale is written as a single melodic line with a slur over the entire phrase. The notes are C3, D3, E3, F3, G3, A3, B3, C4, B3, A3, G3, F3, E3, D3, C3.

F Major

Musical staff for F Major scale in treble clef, common time. The scale is written as a single melodic line with a slur over the entire phrase. The notes are F2, G2, A2, Bb2, C3, D3, E3, F3, E3, D3, C3, Bb2, A2, G2, F2.

Bb Major

Musical staff for Bb Major scale in treble clef, common time. The scale is written as a single melodic line with a slur over the entire phrase. The notes are Bb2, C3, D3, Eb3, F3, G3, Ab3, Bb3, Ab3, G3, F3, Eb3, D3, C3, Bb2.

Eb Major

Musical staff for Eb Major scale in treble clef, common time. The scale is written as a single melodic line with a slur over the entire phrase. The notes are Eb2, F2, G2, Ab2, Bb2, C3, D3, Eb3, D3, C3, Bb2, Ab2, G2, F2, Eb2.

Ab Major

Musical staff for Ab Major scale in treble clef, common time. The scale is written as a single melodic line with a slur over the entire phrase. The notes are Ab2, Bb2, C3, Db3, Eb3, F3, G3, Ab3, G3, F3, Eb3, Db3, C3, Bb2, Ab2.

Db Major

Musical staff for Db Major scale in treble clef, common time. The scale is written as a single melodic line with a slur over the entire phrase. The notes are Db2, Eb2, F2, Gb2, Ab2, Bb2, C3, Db3, C3, Bb2, Ab2, Gb2, F2, Eb2, Db2.

F# Major

Musical staff for F# Major scale in treble clef, common time. The scale is written as a single melodic line with a slur over the entire phrase. The notes are F#2, G#2, A2, B2, C#3, D#3, E#3, F#3, E#3, D#3, C#3, B2, A2, G#2, F#2.

B Major

Musical staff for B Major scale in treble clef, common time. The scale is written as a single melodic line with a slur over the entire phrase. The notes are B2, C#3, D#3, E#3, F#3, G#3, A#3, B3, A#3, G#3, F#3, E#3, D#3, C#3, B2.

c# harmonic minor



f# harmonic minor



b harmonic minor



e harmonic minor



a harmonic minor



d harmonic minor



g harmonic minor



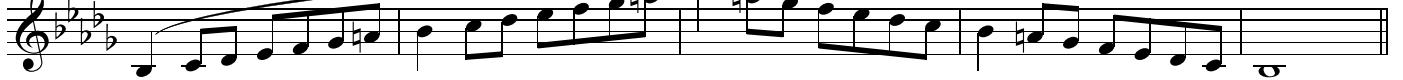
c harmonic minor



f harmonic minor



bb harmonic minor



eb harmonic minor



ab harmonic minor



Chromatic

Two staves of musical notation for chromatic scale exercises. The first staff starts on a treble clef with a key signature of one sharp (F#) and contains a series of eighth notes with triplet markings (3) above them. The second staff starts on a treble clef with a key signature of one flat (Bb) and contains a series of eighth notes with triplet markings (3) below them. Both staves end with a double bar line.

Concert C Dorian

A single staff of musical notation for the Concert C Dorian scale. It starts on a treble clef with a key signature of one flat (Bb). The scale is written as a sequence of eighth notes: C, D, Eb, E, F, G, A, Bb, C. The staff ends with a double bar line.

Concert C Lydian

A single staff of musical notation for the Concert C Lydian scale. It starts on a treble clef with a key signature of one sharp (F#). The scale is written as a sequence of eighth notes: C, D, E, F#, G, A, B, C. The staff ends with a double bar line.

Concert C Mixolydian

A single staff of musical notation for the Concert C Mixolydian scale. It starts on a treble clef with a key signature of one sharp (F#). The scale is written as a sequence of eighth notes: C, D, E, F#, G, Ab, A, C. The staff ends with a double bar line.