

Revised June 2022
Massachusetts Music Educators Association
Jazz Vibes Scales

♩ = 100

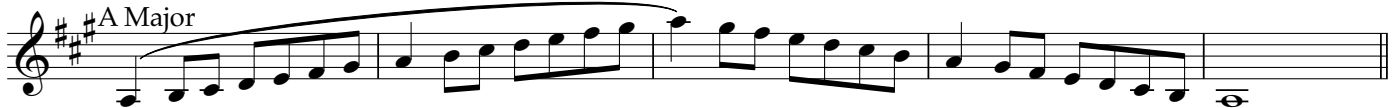
B Major



E Major



A Major



D Major



G Major



C Major



F Major



Bb Major



Eb Major



Ab Major



Db Major



Gb Major



c# harmonic minor



A musical staff in treble clef showing the c# harmonic minor scale. The key signature has three sharps (F#, C#, G#). The scale is written as a single melodic line with a long slur over it, starting on C5 and ending on C6. The notes are: C5, D5, E5, F#5, G#5, A5, B5, C6.

f# harmonic minor



A musical staff in treble clef showing the f# harmonic minor scale. The key signature has four sharps (F#, C#, G#, D#). The scale is written as a single melodic line with a long slur over it, starting on F#5 and ending on F#6. The notes are: F#5, G#5, A5, B5, C6, D#6, E6, F#6.

b harmonic minor



A musical staff in treble clef showing the b harmonic minor scale. The key signature has two sharps (F#, C#). The scale is written as a single melodic line with a long slur over it, starting on B4 and ending on B5. The notes are: B4, C5, D5, E5, F#5, G#5, A5, B5.

e harmonic minor



A musical staff in treble clef showing the e harmonic minor scale. The key signature has one sharp (F#). The scale is written as a single melodic line with a long slur over it, starting on E4 and ending on E5. The notes are: E4, F#4, G4, A4, B4, C5, D5, E5.

a harmonic minor



A musical staff in treble clef showing the a harmonic minor scale. The key signature has no sharps or flats. The scale is written as a single melodic line with a long slur over it, starting on A4 and ending on A5. The notes are: A4, B4, C5, D5, E5, F#5, G#5, A5.

d harmonic minor



A musical staff in treble clef showing the d harmonic minor scale. The key signature has one flat (Bb). The scale is written as a single melodic line with a long slur over it, starting on D4 and ending on D5. The notes are: D4, E4, F#4, G4, A4, Bb4, C5, D5.

g harmonic minor



A musical staff in treble clef showing the g harmonic minor scale. The key signature has two flats (Bb, Eb). The scale is written as a single melodic line with a long slur over it, starting on G3 and ending on G4. The notes are: G3, A3, Bb3, C4, D4, Eb4, F#4, G4.

c harmonic minor



A musical staff in treble clef showing the c harmonic minor scale. The key signature has three flats (Bb, Eb, Ab). The scale is written as a single melodic line with a long slur over it, starting on C4 and ending on C5. The notes are: C4, D4, Eb4, F#4, G4, Ab4, Bb4, C5.

f harmonic minor



A musical staff in treble clef showing the f harmonic minor scale. The key signature has four flats (Bb, Eb, Ab, Db). The scale is written as a single melodic line with a long slur over it, starting on F4 and ending on F5. The notes are: F4, G4, Ab4, Bb4, C5, Db5, Eb5, F5.

b# harmonic minor



A musical staff in treble clef showing the b# harmonic minor scale. The key signature has five flats (Bb, Eb, Ab, Db, Gb). The scale is written as a single melodic line with a long slur over it, starting on Bb4 and ending on Bb5. The notes are: Bb4, C5, Db5, Eb5, F5, Gb5, Ab5, Bb5.

eb harmonic minor



A musical staff in treble clef showing the eb harmonic minor scale. The key signature has six flats (Bb, Eb, Ab, Db, Gb, Cb). The scale is written as a single melodic line with a long slur over it, starting on Eb4 and ending on Eb5. The notes are: Eb4, F5, Gb5, Ab5, Bb5, Cb6, Db6, Eb6.

ab harmonic minor



A musical staff in treble clef showing the ab harmonic minor scale. The key signature has seven flats (Bb, Eb, Ab, Db, Gb, Cb, Fb). The scale is written as a single melodic line with a long slur over it, starting on Ab4 and ending on Ab5. The notes are: Ab4, Bb5, Cb6, Db6, Eb6, Fb6, Gb6, Ab6.

Chromatic Scale



A musical staff in treble clef showing a chromatic scale. The key signature has three sharps (F#, C#, G#). The scale is written as a single melodic line with a long slur over it, starting on C5 and ending on C6. The notes are: C5, C#5, D5, D#5, E5, E#5, F5, F#5, G5, G#5, A5, A#5, B5, B#5, C6. There are triplets (3) over the first four notes of each octave.



A musical staff in treble clef showing a chromatic scale. The key signature has one flat (Bb). The scale is written as a single melodic line with a long slur over it, starting on Bb4 and ending on Bb5. The notes are: Bb4, Bb#4, C5, C#5, D5, D#5, E5, E#5, F5, F#5, G5, G#5, A5, A#5, Bb5. There are triplets (3) over the first four notes of each octave.